

INVASIVE PEST ALERT

Serious invasive insect pest known as **South American tomato pinworm, *Tuta absoluta* (Meyrick, 1917)** (Lepidoptera: Gelechiidae) also known as the tomato leaf miner is observed for the first time infesting tomato crop in Maharashtra, India. This pest has been classified as the most serious threat for tomato production worldwide. It can cause up to 90% loss of yield and fruit quality under greenhouses and field conditions. The pest was initially observed in Pune on tomato plants grown in polyhouse and field during October 2014. The specimens were collected, identified and deposited in National Pusa Collection (NPC), Division of Entomology, ICAR-IARI, New Delhi by ICAR-IARI scientists. Subsequently the pest was observed in the farmer's fields in major tomato growing districts of Maharashtra viz., Pune, Ahmadnagar, Dhule, Jalgaon, Nashik, and Satara. Severe infestation (>50% plants affected) was observed in several tomato fields. Its detailed occurrence, damage and diagnostics were communicated for publication. Present information is useful for entomologists, agricultural officers and extension workers for further necessary action.

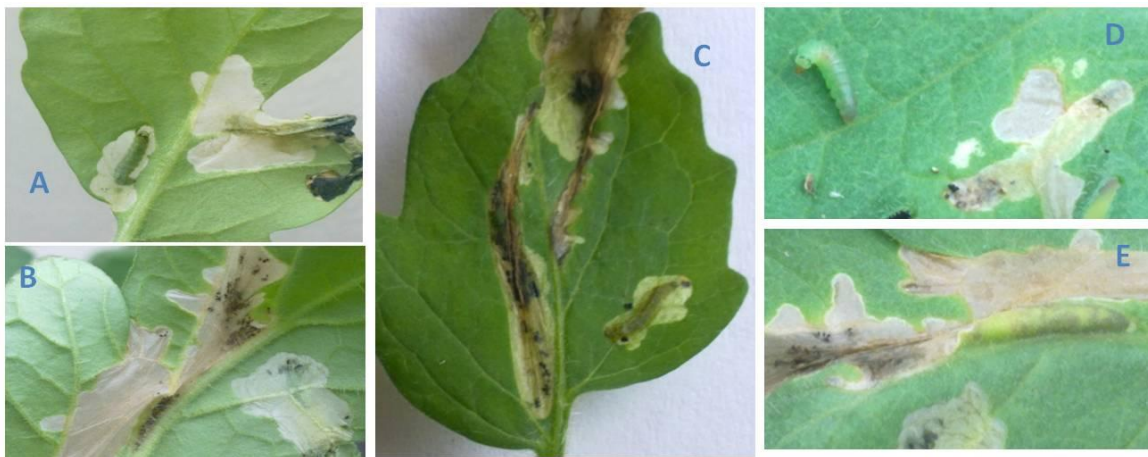


Figure 1A-E: *Tuta absoluta* damage symptoms, mined galleries and larvae inside galleries.

Reported by,

K. Chandrashekar¹ and P.R. Shashank²,

¹Senior Scientist, ICAR-IARI, Regional Station, Pune- 411007, Maharashtra

²Scientist, Insect Taxonomy Lab, Division of Entomology, ICAR-IARI, Pusa Campus, New Delhi-110012

Email: chandrashekark@iari.res.in and shashank@iari.res.in